

MEDIA KIT 2026

GLOBAL HIGHWAYS

GLOBALHIGHWAYS.COM

THE LEADING INFORMATION RESOURCE FOR
DESIGN • CONSTRUCTION • MANAGEMENT AND MAINTENANCE OF THE WORLDS ROAD NETWORKS



THE INFORMED AUTHORITY

Road infrastructure accounts for more than half of all construction spending. Well-maintained and safe roads are a key distinction between developing and developed nations.

The mission of *Global Highways* is to cover the latest technologies and best practices in all areas of road, bridge and tunnel construction and maintenance, as well as their safe operation and management.

Mike Woof

Editor

T: +44 1322 612129

M: +44 7879 405324

E: mwoof@ropl.com

LinkedIn: Connect with Mike Woof

M. Woof



GOING GLOBAL

The Route One Road Infrastructure content team has been researching and writing trusted independent content for 34 years.

Historically, the sharing of that content was limited by the cost of posting printed copies internationally, to addresses which largely excluded North and South America. However, with the rise of the internet, our content now reaches a truly global audience.

**THE TEAM YOU CAN TRUST:
THE AUDIENCE YOU TARGET**

GLOBAL REACH



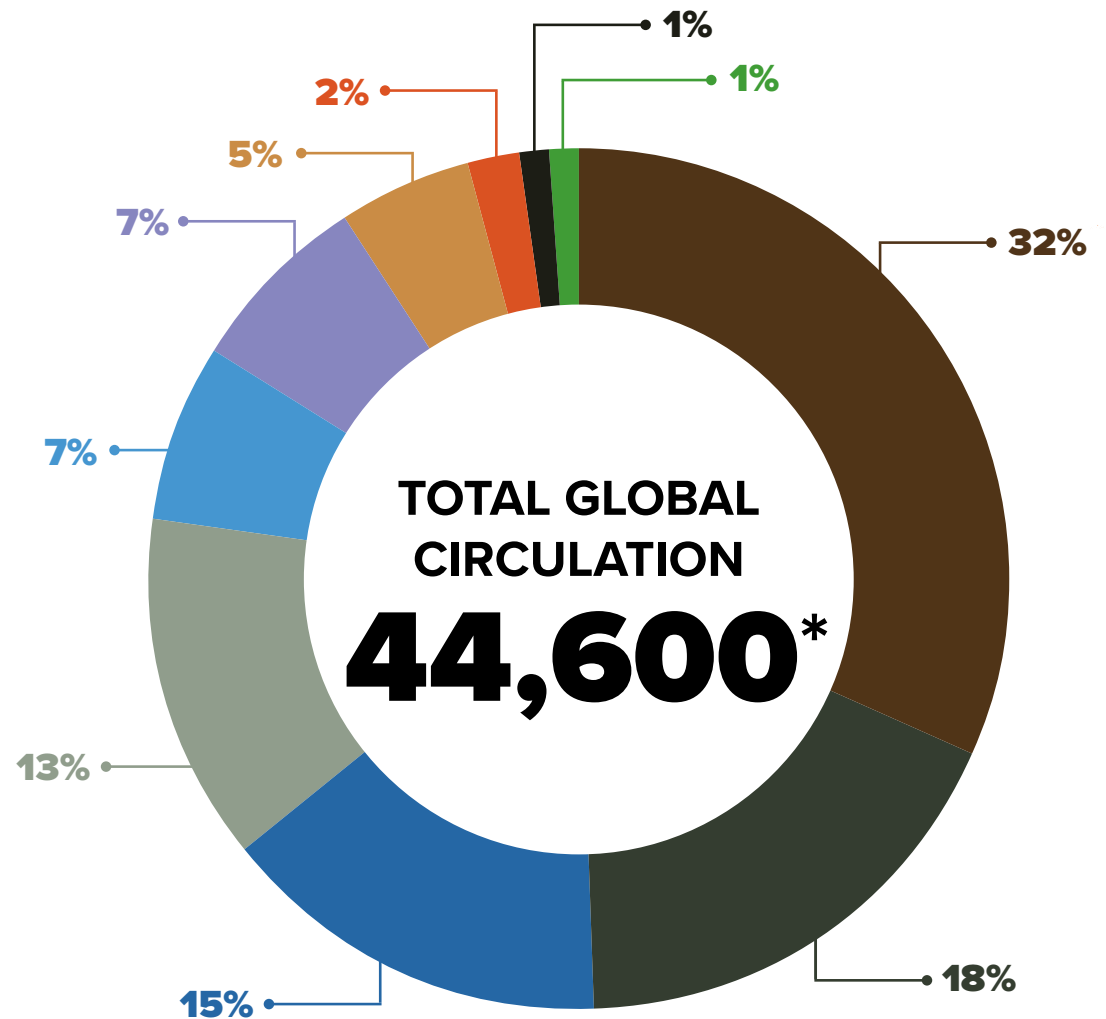
The global impact of the pandemic on postage services was widespread, and the net result of their demise has been significant increases in both postage costs and delivery times. After careful consideration, we have taken the decision to launch *Global Highways* as a new, multi-channel title, to enable our road infrastructure content to be more widely, more speedily, and more conveniently shared.

The US is now our fastest-growing digital audience, adding to our long-established European, Middle Eastern, African, and Asian audiences. We have also added a significant Latin American audience, developed with Carreteras-PA, so that with *Global Highways*, it's now possible to reach a truly global audience.



GLOBAL DECISION MAKERS

- Civil & structural engineering, earthmoving, paving, road marking and safety contractors, sub-contractors, or project management companies.
- Transportation consultant, traffic engineer, architect, urban planner, consulting, engineer/highway engineering practice.
- National, regional or local government highway or transportation department, road owner/operator.
- Equipment or construction materials manufacturer/supplier, vehicle component and vehicle or material producer/supplier.
- Manufacturers of highway & safety equipment.
- Agent, distributor, dealer, importer or hirer of rental or plant equipment.
- Research, education or training establishments.
- Trade and professional organisations/associations.
- Bank, finance company, development agency, legal or accounting firm.
- Other industry professionals.



GLOBAL AUDIENCE



**Total global
audience
44,600***



Print copies will be delivered to requested readers, and digital copies will be delivered to our entire global audience. Advertisers will be able to invest in the global circulation, or strategically select exposure in the digital editions for the following specific regions:-

■ EUROPE **13,122**

■ AFRICA & MIDDLE EAST **4,425**

■ ASIA & AUSTRALASIA **8,381**

■ NORTH AMERICA **10,970**

■ CENTRAL & SOUTH (LATIN) AMERICA **7,157**

■ UNSPECIFIED **545**

For advertisers ONLY interested in Latin America, we can offer advertising in our sister title *Carreteras Pan-Americanas* which is a Spanish-language title. Please ask for more details.

CARRETERAS
PAN-AMERICANAS

Content that can be trusted:

REFINED OVER 34 YEARS OF WRITING FOR THE ROAD INFRASTRUCTURE INDUSTRY.

Global Highways plugs directly into a content team with up to 34 years' experience researching, interviewing, and writing with real insight about the topics that are relevant to all the challenges faced by today's engineers and designers.

New technology is flowing thick and fast, and the *Global Highways* content team assesses it with a level of trust built over these many years.

Equally important is our long-established relationship with the world's largest road safety and traffic management industry, and the *Global Highways* team is relied upon by road owners and road designers across the globe to provide a regular flow of information about new products, techniques, and applications.

EVENTS COVERED IN 2026



IN ALL ISSUES	Jan/ Feb	Mar/ Apr	May/ Jun	Jul/ Aug	Sep/ Oct	Nov/ Dec
Construction Technology	✓	✓	✓	✓	✓	✓
Highways Network Management & Safety*	✓	✓	✓	✓	✓	✓
Earthmoving & Soil Compaction	✓	✓	✓	✓	✓	✓
News & Contracts	✓	✓	✓	✓	✓	✓
Onsite & Equipment File	✓	✓	✓	✓	✓	✓
FEATURES	Jan/ Feb	Mar/ Apr	May/ Jun	Jul/ Aug	Sep/ Oct	Nov/ Dec
Asphalt Paving, Milling and Compaction	✓		✓		✓	✓
Airport Paving (Asphalt and Concrete)		✓		✓		
Asphalt Plants and Production	✓			✓	✓	✓
Bitumen Technology and Modification	✓		✓		✓	
Concrete Paving and Slipforming		✓		✓		✓
Concrete Plants and Production		✓		✓		✓
Recycling and Re-use of Pavement Materials and Stabilisation	✓	✓		✓		✓
Bridge and Tunnel Structures, Formwork, Piling and Concrete Pumping	✓		✓		✓	✓
Bridge Maintenance		✓				
Demolition - Breakers and Cutters		✓			✓	
Engines, Components, Tyres and Wear Parts	✓		✓		✓	✓
High Performance Aggregate Production for Roads - Crushing and Screening			✓		✓	
Utility Equipment (Gen Sets, Temp Lighting, Compact Equipment, etc.)		✓		✓		

Roundtables: Autonomous Equipment, Earthmoving, Asphalt Plants, Road Construction Equipment, Connected Construction, Sustainable Drivelines



*Covering topics such as; Asset Management, Surveying, Data Capture, Software, GIS & WIM, Road Markings, Reflective Signage and VMS, Safety Barriers, Fixed and Moveable, Workzone Safety, Temporary Barriers, Lighting Signage, Gen Sets, Road and Tunnel Lighting, Emergency Systems and Utility Equipment.

GLOBAL RATES

Who should advertise?

1. OEMs (Earthmoving, Milling, Paving & Compaction),
2. Bitumen Technology and Modification
3. Asphalt and Concrete Plant manufacturers
4. Technology companies (Connected Construction)
5. Bridge and Tunnel Structures (Build and Maintenance)
6. Formwork, Piling and Concrete Pumping
7. All companies involved in Highway Network Management (including; Asset management, Surveying, Road Markings, Safety Barriers, Temporary Lighting and Work Zone Safety)
8. Consulting Engineers, Design companies, etc
9. Finance and Logistics companies



	1x	2X	3X	
DOUBLE PAGE SPREAD				
FULL PAGE				
TWO-THIRDS PAGE				
ONE-THIRD PAGE				
HALF PAGE				
QUARTER PAGE				
SPECIAL POSITION EXTRA CHARGES				
FACING MATTER:	FIRST DPS:	IFC/OBC:	IBC:	ISLAND:



GLOBAL OUTLOOK SERIES



CONSTRUCTION EQUIPMENT AND TECHNOLOGY

JUNE 2026

■ Print and digital ■ 13th edition ■ Circulation in excess of **44,600**

The GLOBAL OUTLOOK: Construction Equipment and Technology brings in depth expert views on the critical factors that today's users of construction equipment need to consider when specifying their machinery needs. Our team of specialist construction equipment writers join forces with industry experts to provide insights into the most important developments and opportunities facing the market.

DIGITALISATION IN CONSTRUCTION

SEPTEMBER 2026

■ Digital distribution ■ 3rd edition ■ Circulation in excess of **44,600**

Launched in 2024, this publication focuses on the ever-changing world of connected construction. Hear from our team as well as the manufacturers and users on the latest products and technology, how using technology can save you both time and money. With product reviews and site applications, this is a must-read publication.

GLOBAL OUTLOOK SERIES



ROAD SURFACE TECHNOLOGY

OCTOBER 2026

■ Print and digital ■ 10th edition ■ Circulation in excess of **44,600**

As road networks age, the budgets for maintenance are becoming an increasing area of importance to maintain our roads at the highest level. Road Surface Technology is dedicated to surface engineering & surface treatments looking at the latest technologies in milling, recycling, microsurfacing, bitumen slurry/emulsions, additives, miracle pothole repairs and modified binders aiming to provide an overview of the latest innovations in this important growing market.



SUSTAINABLE ROAD NETWORKS

DECEMBER 2026

■ Digital distribution ■ 4th edition ■ Circulation in excess of **44,600**

Sustainability is a common thread running through all road-related transport infrastructure projects. To justify the investment of public funds, contractors and suppliers are required to prove their credentials in order to play, Global Highways is ideally placed to report on all aspects of sustainability, with its seven senior staff journalists and its worldwide network of expert reporters. The 5th edition of our Sustainability Round Tables will provide thought-leadership discussions around many of the topics that will be shared across all platforms

WEBSITE

PRODUCT OR CONTENT LAUNCH

Cost per month

Included in the package:

- An image of your choice
- Supply 300-500 words
- Promoted on our social media channels

PREMIUM PRODUCT OR CONTENT LAUNCH

Cost per month

Included in the package:

- An image of your choice
- Supply 300-500 words
- A video or download sheet integrated within your article
- Promoted on our social media channels.
- Featured in *Global Highways* as a 150 word printed editorial, including a product photo

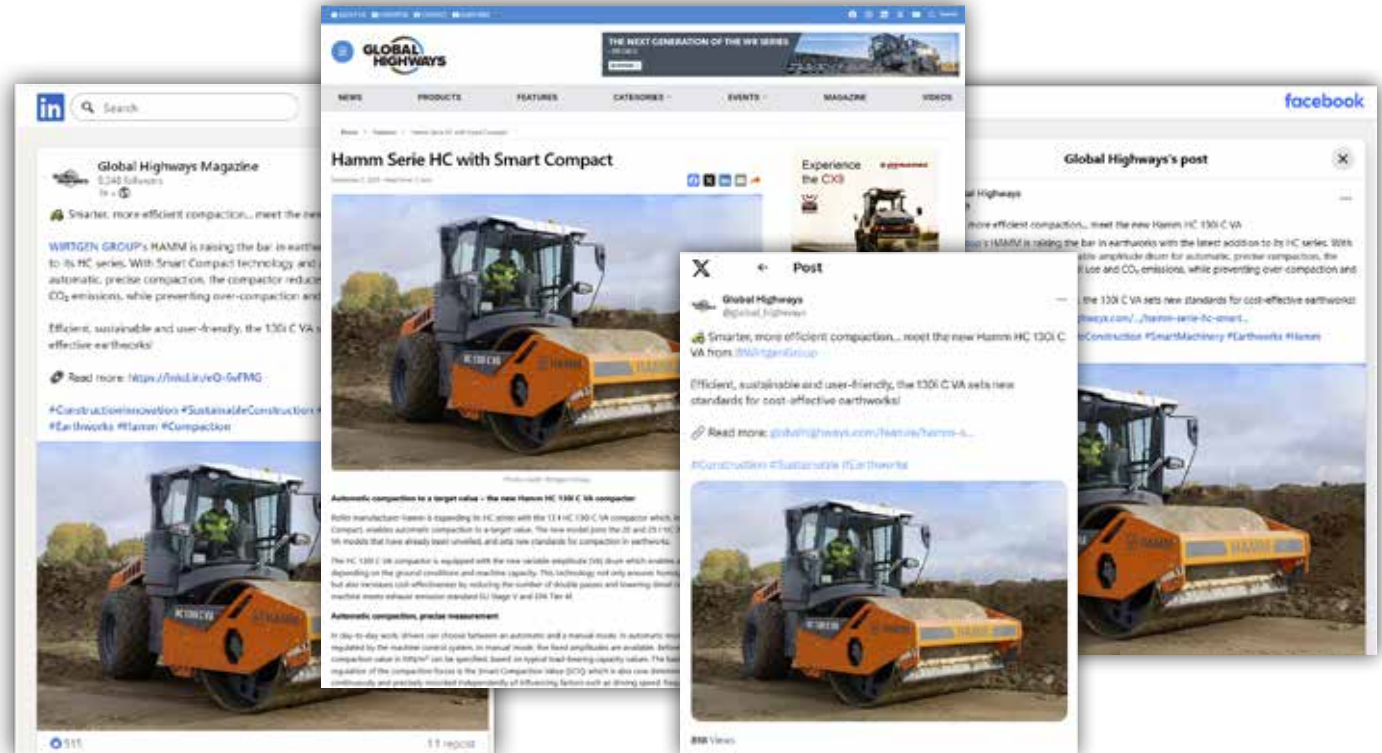
FOCUS FEATURE

Cost per month

Included in the package:

- Images of your choice
- Supply 1500 words
- A video or download sheet
- Promoted and boosted on our social media channels and eNewsletters
- The feature will also appear on the homepage within "featured articles" and under highlighted content on nearly every page within slider advert

SPONSORED CONTENT

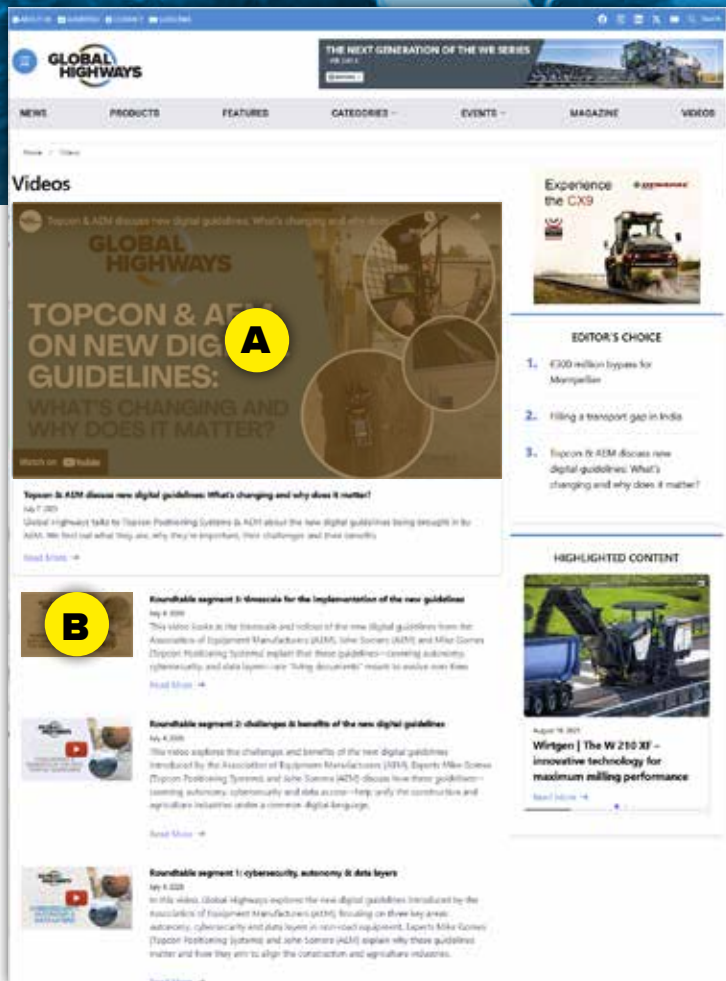


In an industry constantly seeking information such as data sheets, case studies, and product details, content marketing provides a fresh and engaging layer to your campaign.

By sharing valuable insights, you not only help industry professionals excel in their work but also position your company as a thought leader and expert in the field.

All sponsored content will be prominently featured in the Features or Products sections for one month, then archived for an additional 12 months, ensuring long-term visibility. It will also be promoted across our website, eNewsletters, and expanding social media channels.

SPONSORED VIDEO



With video now the most dynamic information source across all digital and social platforms, placing your video in a prime position on **www.globalhighways.com** is a powerful and cost-effective way to garner response and build awareness.

A. PREMIUM VIDEO POSITION Cost per month

Positioned in a prime slot at the top of the homepage as well as video lists on the site. The video will appear in a prime position for 1 month and then archived and available for a further year.

PRODUCT WALK AROUND/SITE REPORT VIDEO POA

Hosted by one of our experts, the product walk around will be professionally filmed and edited by our production department. The video will be hosted in a prime slot on the home page.

B. STANDARD VIDEO Cost per month

Your video will be hosted on the homepage and in the video lists.

INTEGRATED VIDEO CONTENT IN THE DIGITAL ISSUES OF GLOBAL HIGHWAYS POA

There is an opportunity to host video content in the digital issue of *Global Highways*. The video can be hosted amongst relevant content or hosted on a bespoke branded page.

A. LEADERBOARD

(Max 3x Advertisers)

Cost per month:

Desktop size: 728 x 90

Responsive size: 300 x 100

B. MPU

(Max 5x Advertisers)

Cost per month:

Desktop size: 300 x 250

Responsive size: 300 x 250

C. MINI MPU

(Max 3x Advertisers)

Cost per month:

Desktop size: 300 x 100

Responsive size: 300 x 100

D. MPU PREMIUM PRODUCT LAUNCH

(Max 1x Advertiser per month)

Cost per month:

Desktop size: 300 x 250

Responsive size: 300 x 250

E. MPU

(Max 5x Advertisers)

Cost per month:

Desktop size: 300 x 250

Responsive size: 300 x 250

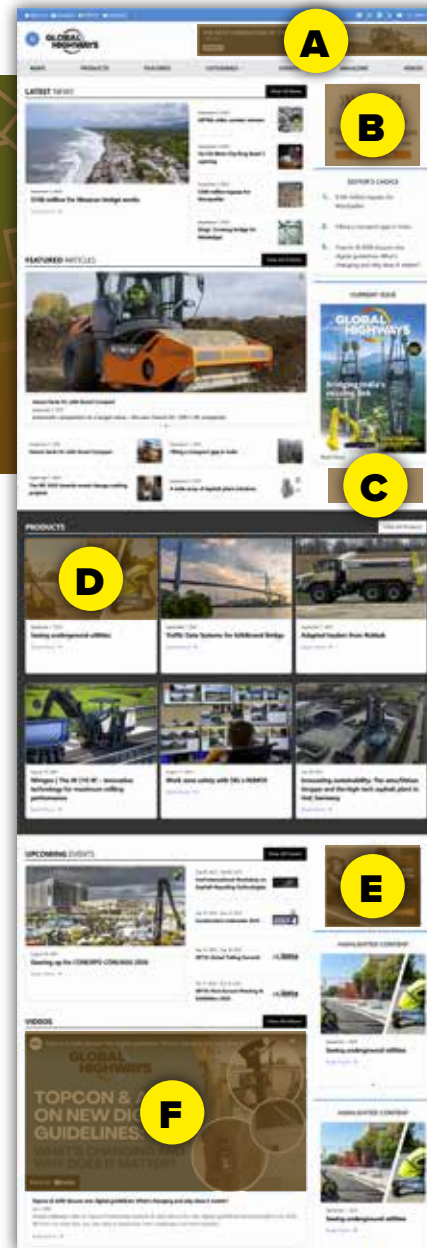
F. MINI MPU

(Max 5 advertisers)

Cost per month:

Desktop size: 300 x 100

Responsive size: 300 x 100



G. SPECIAL POSITION – CATFISH BANNER

(One advertiser per month)



This is the most visible position on the website and effectively becomes part of the website, as it is constantly on-screen, even when visitors scroll the page or change pages. This is the most impactful position on the website, as it is exclusive to one company per month.

Cost per month:

Desktop size: 728 x 90 pixels

Responsive sizes: 300 x 100, 300 x 50, 600 x 75 pixels

The Catfish banner floats above published content on the website.

43,942*
**GLOBAL
AUDIENCE**

Only 5 banner positions available per eNewsletter.

One premium banner which always appears first.

Price:

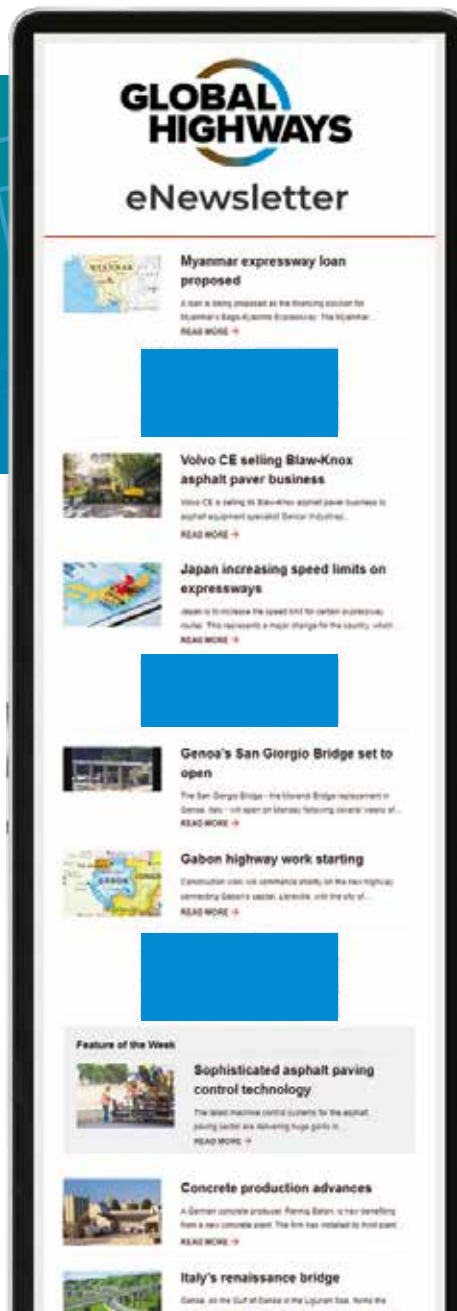
Four regular banners that appear in order of booking.

Price per banner:

(eNewsletter banner size: 300 x 125 pixels)

Why use our eNewsletter?

Our digital database of industry professionals consists exclusively of people who have subscribed to one of our print magazines, eNewsletters or *DailyNews* online bulletins, or who have attended an industry event where we have supplied the official communications; many are also members of a relevant professional industry association.



2026 eNEWSLETTER DATES

- January 8th and 22nd
- February 5th and 19th
- March 5th and 19th
- April 2nd, 16th and 30th
- May 14th and 28th
- June 11th and 25th
- July 9th and 23rd
- August 6th and 20th
- September 3rd and 17th
- October 1st, 15th and 29th
- November 12th and 26th
- December 10th

**TO DISCUSS SPECIFIC
REQUIREMENTS,
PLEASE CONTACT:**

Graeme McQueen

Head of construction sales

E: gmcqueen@ropl.com

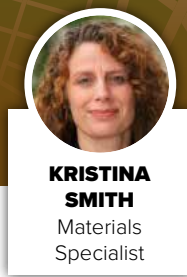
T: +44 1322 612069

M: +44 7833 445592



**Publisher's own data*

GLOBAL TEAM



THE INFORMED AUTHORITY



**FREE
SUBSCRIPTION!**

THE LEADING INFORMATION RESOURCE FOR

DESIGN • CONSTRUCTION • MANAGEMENT AND MAINTENANCE OF THE WORLD'S ROAD NETWORKS



Global Highways' writes about new technology and best practice for all aspects of road, bridge and tunnel construction and maintenance, through to their safe operation and management.

• 6 ISSUES PER YEAR • BI-MONTHLY eNEWSLETTERS • 4 ANNUAL REPORTS • FREQUENTLY UPDATED WEBSITE

**SCAN QR CODE TO REGISTER
FOR YOUR FREE SUBSCRIPTION!**



WWW.GLOBALHIGHWAYS.COM



Route One Publishing Limited
Second floor, West Hill House
West Hill, Dartford, Kent
DA1 2EU, United Kingdom

E: media@ropl.com

T: +44 1322 612055

F: +44 1322 788063

www.ropl.com